

EXPLORE & OBSERVE!



My name:

My class:

Park:



Exhibit / Bird:

Colours seen:

- ☐ Green ☐ Blue
- ☐ Orange ☐ Red
- ☐ Black ☐ White
- ☐ Others: _____

Type of beak:

- ☐ Long ☐ Curved
- ☐ Hooked ☐ Straight
- ☐ Flat ☐ Pointed
- ☐ Wide ☐ Others: _____

What was it doing?

- ☐ Digging ☐ Looking for food
- ☐ Calling to other birds ☐ Carrying something
- ☐ Resting ☐ Moving

Doodle the bird here!

Where did I see the bird?



- ☐ In the trees ☐ Standing in a group
- ☐ On the ground ☐ Sitting in a nest
- ☐ In the water ☐ In the bushes
- ☐ Standing alone ☐ Flying overhead

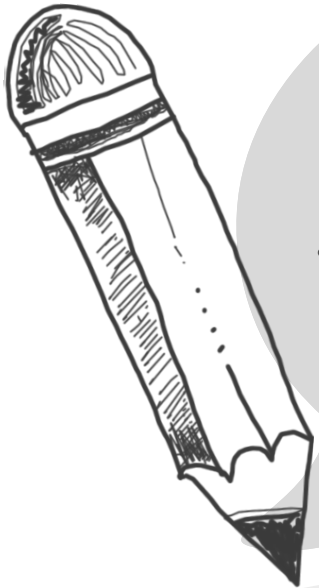


What is one thing I wonder about this bird?

COMPARE & SHARE!



1. Find a partner
2. Share your observations
3. Guess what type of bird your partner observed!

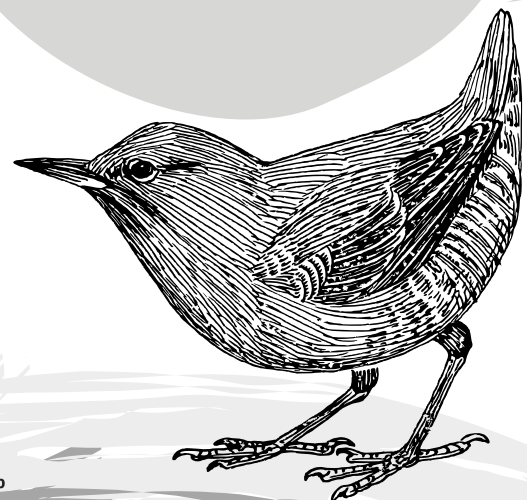


How are they similar?

Do you think your birds are the same?

What is one thing I discovered about this bird?

How are they different?



Wildlife Reserves Singapore Group

